



Motoreduktor BLDC model XBM+XTG 20-400W do 70Nm



ZALETY:

- **silnik BLDC 20-400W,**
- **szeroki zakres kontroli prędkości obrotowej,**
- **wysoka sprawność,**
- **przekładnia walcowa o dużej sprawności,**
- **cicha praca dzięki helikalnym zębatkom przekładni.**

SPECYFIKACJA:

Parametry elektryczne:

Moc: **20 - 400W**
 Zasilanie AC: **1 fazowe 200-230V, 3 fazowe 200-230**
 Częstotliwość pracy: **50Hz**

Parametry mechaniczne:

Moment obrotowy: **0.29 – 70Nm**
 Prędkość obrotowa wyjściowa: **1.5 - 600 obr/min**
 Wałek wyjściowy: **z wycięciem na klin, pełny, ścięty „D-cut”**
 Łożyska: **kulkowe**

Parametry eksploatacyjne

Tryb pracy: **ciągły S1**
 Stopień ochrony IP: **IP65 (oprócz części od strony wałka)**
 Temperatura pracy: **0°C +40°C**
 Klasa izolacji: **B**

W celu złożenia zapytania ofertowego prosimy o podanie modelu, napięcia zasilania, prędkości wyjściowej, momentu obrotowego np.: XBM620G+XTG65K, 60-600rpm, 0.29Nm 1Ø230V. Prosimy o kontakt z naszym konsultantem technicznym celem prawidłowego dobrania motoreduktora do aplikacji.

TABELA SILNIKA:

| Typ | Moc (W) | Napięcie (VAC) | Prąd nominalny (A) | Prąd max (A) | Moment nominalny (Nm) | Moment startowy (Nm) | Prędkość (obr./min.) |
|-----------|---------|----------------|--------------------|--------------|-----------------------|----------------------|----------------------|
| XBM620G | 20 | 1Ø 200-230V | 0.40 | 0.90 | 0.066 | 0.08 | 3000 |
| | | 3Ø 200-230V | 0.27 | 0.50 | | | |
| XBM840G | 40 | 1Ø 200-230V | 0.66 | 1.30 | 0.133 | 0.16 | |
| | | 3Ø 200-230V | 0.43 | 0.88 | | | |
| XBM975G | 75 | 1Ø 200-230V | 1.00 | 2.00 | 0.250 | 0.32 | |
| | | 3Ø 200-230V | 0.75 | 1.20 | | | |
| XBM9120G | 120 | 1Ø 200-230V | 1.50 | 2.70 | 0.400 | 0.50 | |
| | | 3Ø 200-230V | 1.00 | 1.60 | | | |
| XBM9150G | 150 | 1Ø 200-230V | 1.80 | 3.23 | 0.500 | 0.63 | |
| | | 3Ø 200-230V | 1.15 | 1.96 | | | |
| XBM10200G | 200 | 1Ø 200-230V | 2.10 | 3.36 | 0.650 | 0.81 | |
| | | 3Ø 200-230V | 1.75 | 2.80 | | | |
| XBM10400G | 400 | 3Ø 200-230V | 2.30 | 3.68 | 1.300 | 1.60 | |



Motoreduktor BLDC model XBM+XTG 20-400W do 70Nm

TABELA PRZEKŁADNI:

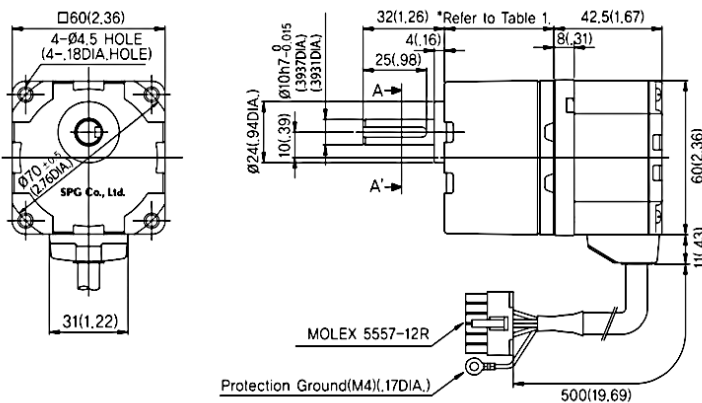
| Model | Przełożenie zakres rpm | 5 | 10 | 15 | 20 | 30 | 50 | 100 | 200 |
|---------------|---------------------------|-------------|-------|-------|-------|-------|-------|-------|-------|
| | | Moment (Nm) | | | | | | | |
| XBA620()-□K | | 0.29 | 0.59 | 0.88 | 1.20 | 1.70 | 2.80 | 5.60 | 6.00 |
| XBA840()-□K | | 0.59 | 1.20 | 1.80 | 2.30 | 3.40 | 5.60 | 11.20 | 16.00 |
| XBA975()-□K | | 1.10 | 2.30 | 3.40 | 4.50 | 6.50 | 10.80 | 21.50 | 30.00 |
| XBA9120()-□K | | 1.80 | 3.60 | 5.40 | 7.20 | 10.30 | 17.20 | 30.00 | 30.00 |
| XBA9150()-□K | | 2.70 | 5.40 | 8.10 | 10.80 | 15.40 | 25.80 | 30.00 | 30.00 |
| XBA10200()-□K | | 2.90 | 5.90 | 8.80 | 11.70 | 16.80 | 28.00 | 52.70 | 70.00 |
| XBA10400()-□K | | 5.90 | 11.70 | 17.60 | 23.40 | 33.50 | 55.90 | 70.00 | 70.00 |

* () – dotyczy napięcia

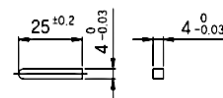
* □ - dotyczy przełożenia

RYSUNKI TECHNICZNE:

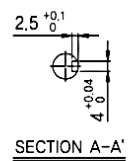
- Motor : XBM620G
- Gear Head : XTG65K~XTG6200K
- Control Unit : XBD20()



■ Key (accessories)



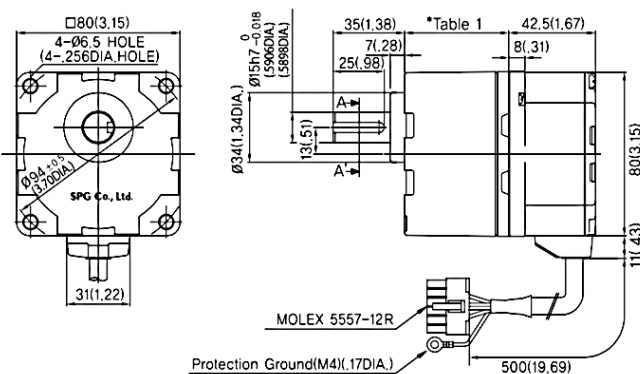
■ Key Groove



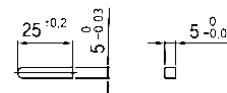
※ Table 1

| Gear Ratio | Size:mm(inch) |
|-------------------|---------------|
| XTG65K~XTG620K | 34(1,34) |
| XTG630K~ XTG6100K | 38(1,50) |
| XTG6200K | 43(1,69) |

- Motor : XBM840G
- Gear Head : XTG85K~XTG8200K
- Control Unit : XBD40()



■ Key (accessories)



■ Key Groove

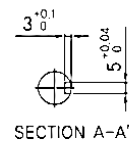


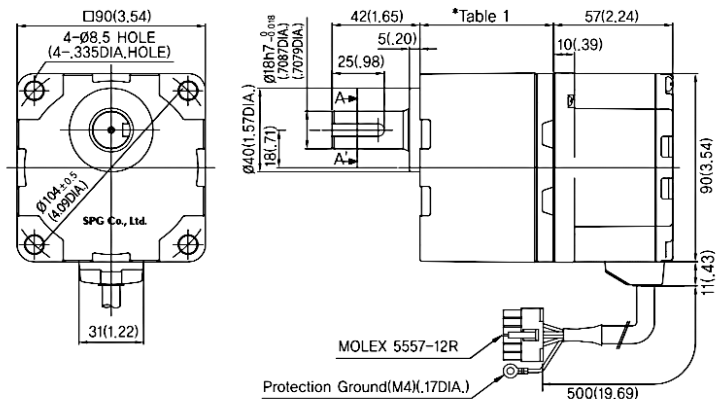
Table 1

| Gear Ratio | Size:mm(inch) |
|-------------------|---------------|
| XTG85K~XTG820K | 41(1,61) |
| XTG830K~ XTG8100K | 46(1,81) |
| XTG8200K | 51(2,01) |

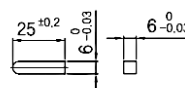


Motoreduktor BLDC model XBM+XTG 20-400W do 70Nm

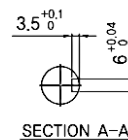
- Motor : XBM975G
- Gear Head : XTG95K~XTG9200K
- Control Unit : XBD75()



■ Key(accessories)



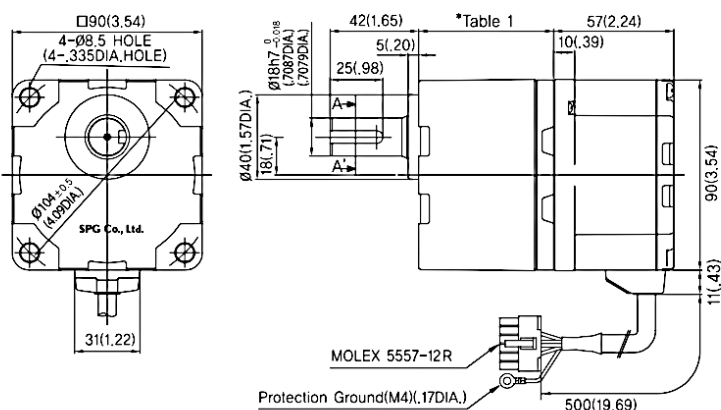
■ Key Groove



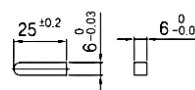
※ Table 1

| Gear Ratio | Size:mm(inch) |
|-------------------|---------------|
| XTG95K~XTG920K | 45(1.77) |
| XTG930K~ XTG9100K | 58(2.28) |
| XTG9200K | 64(2.52) |

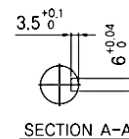
- Motor : XBM9120G
- Gear Head : XTG95K~XTG9200K
- Control Unit : XBD120()



■ Key(accessories)



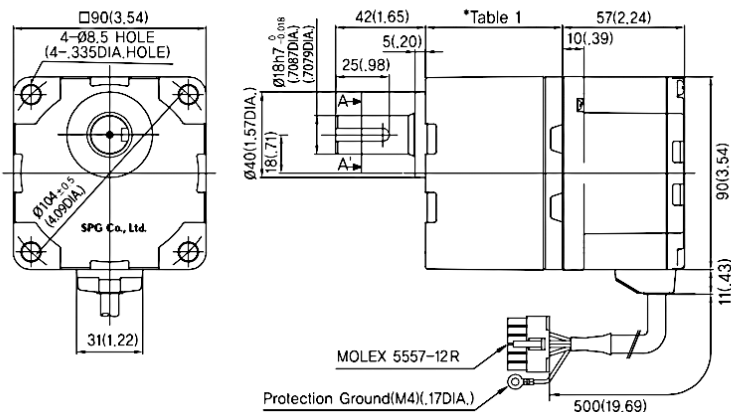
■ Key Groove



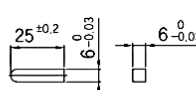
※ Table 1

| Gear Ratio | Size:mm(inch) |
|-------------------|---------------|
| XTG95K~XTG920K | 45(1.77) |
| XTG930K~ XTG9100K | 58(2.28) |
| XTG9200K | 64(2.52) |

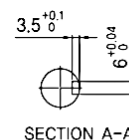
- Motor : XBM9150G
- Gear Head : XTG95K~XTG9200K
- Control Unit : XBD150()



■ Key(accessories)



■ Key Groove



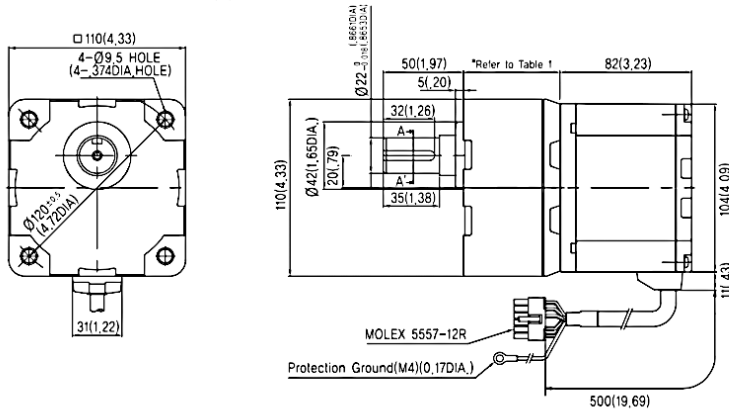
※ Table 1

| Gear Ratio | Size:mm(inch) |
|-------------------|---------------|
| XTG95K~XTG920K | 45(1.77) |
| XTG930K~ XTG9100K | 58(2.28) |
| XTG9200K | 64(2.52) |



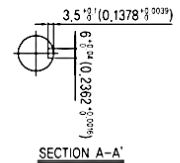
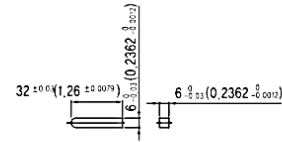
Motoreduktor BLDC model XBM+XTG 20-400W do 70Nm

- Motor : XBM10200G
- Gear Head : XTG105K~XTG1020K
- Control Unit : XBD200()



■ Key(accessories)

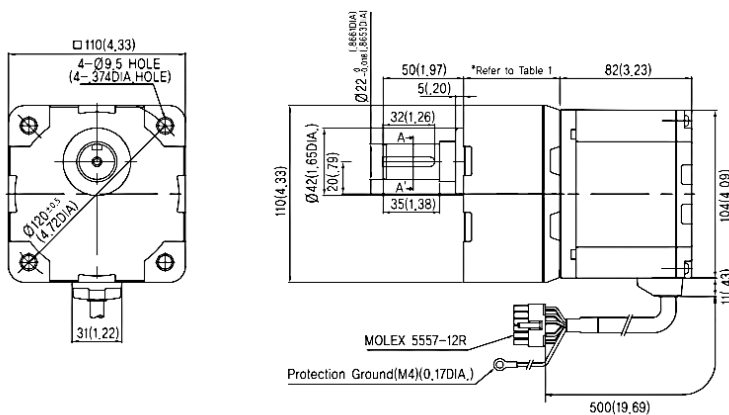
■ Key Groove



※ Table 1

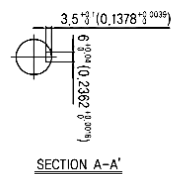
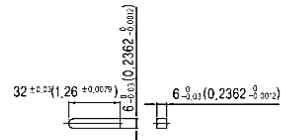
| Gear Ratio | Size(mm)(in) |
|---------------------|--------------|
| XTG105K~XTG1020K | 60(2.36) |
| XTG1030K~ XTG1050K | 72(2.83) |
| XTG10100K~XTG10200K | 86(3.39) |

- Motor : XBM10400G
- Gear Head : XTG105K~XTG1020K
- Control Unit : XBD400U



■ Key(accessories)

■ Key Groove



※ Table 1

| Gear Ratio | Size(mm)(in) |
|---------------------|--------------|
| XTG105K~XTG1020K | 60(2.36) |
| XTG1030K~ XTG1050K | 72(2.83) |
| XTG10100K~XTG10200K | 86(3.39) |